

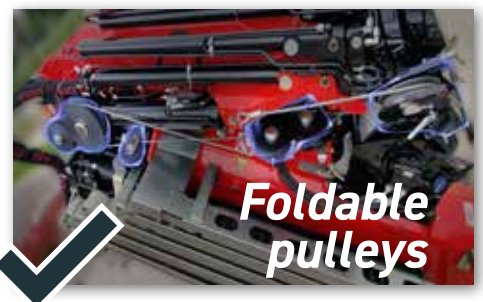
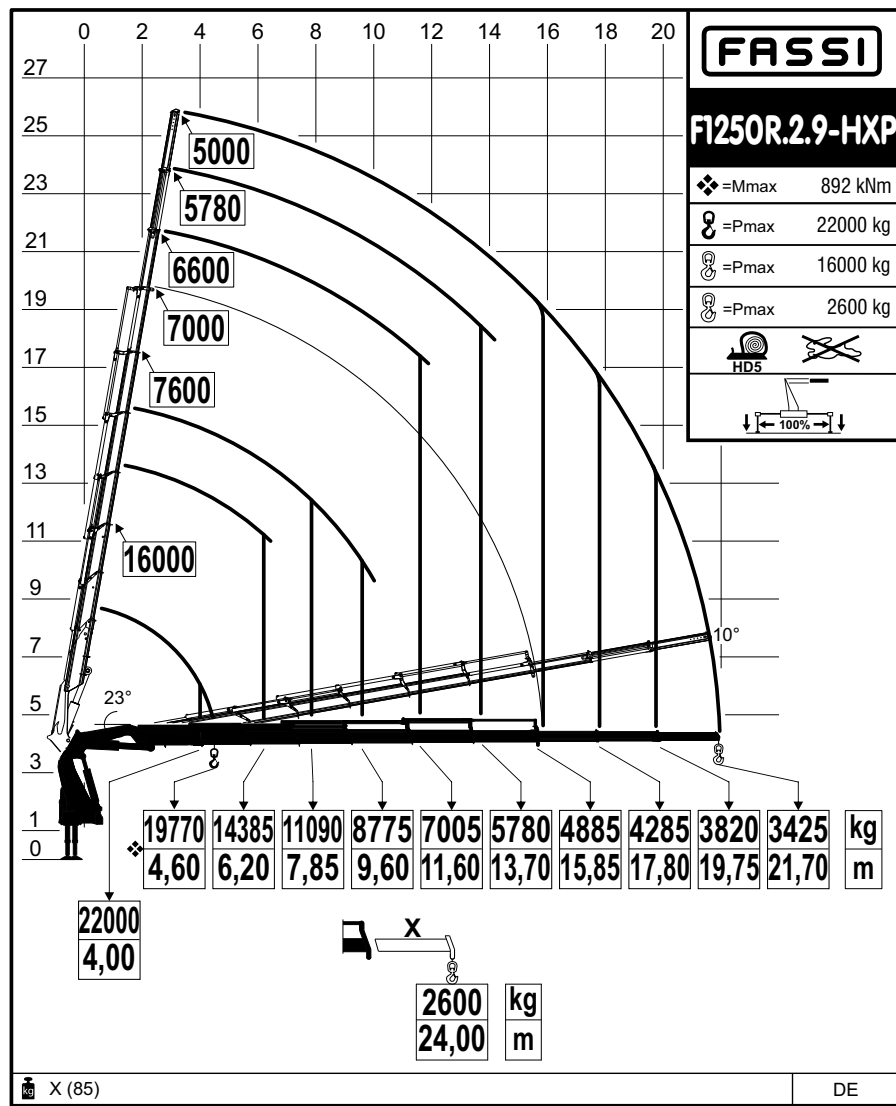
F1250R.2-HXP TECHNO



F1250R.2-HXP TECHNO



LEADER **IN** INNOVATION



	kNm	m	m	°	kg	m	m	m
F1250R.2.9	892	22,00	17,10	360°	9555	2540	1880	2630
F1250R.2.9/L436	892	31,80	24,15	360°	11005	2545	2025	2935

	Max Moment	Standard reach	Hydraulic extension	Rotation	Crane weight	Crane width	Installation width	Crane height
--	------------	----------------	---------------------	----------	--------------	-------------	--------------------	--------------

X Design

PERFORMANCE + 50%

The decagonal section is characterised by increased mechanical performance, motion guides and the inertial stability of vertical loads. The result is that, in comparison to the hexagonal section, lighter solutions can be developed that offer the same mechanical performance, and higher mechanical performance can be achieved with the same weight.

In fact is an increase in vertical performance of more than 50% has been achieved.

F1250R.2-HXP TECHNO

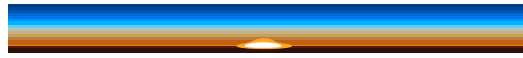
- The new dynamic lift control
- The system of folding pulleys on the winch
- Excellent power-to-weight ratio
- The brand-new stability control
- The new display interface



TECHNO

The main feature of the new **FX990** unit is the significant increase in resources with **three CAN-BUS lines**; one dedicated to sensors, one to controls and one to vehicle connection. The latter relates to the importance of previous developments, from FX-Link to the DBF (Drive by Fassi) function for the remote control of the truck via the crane's V7 radio controller. In addition, **two Ethernet lines** further **extend connectivity and processing power**, another first.

Lifting Tomorrow



LEADER IN INNOVATION



FASSI GRU S.p.A.
Via Roma, 110
24021 Albino (Bergamo) ITALY
Tel- +39 035 776400
Fax +39 035 755020
www.fassi.com
fassi@fassi.com

COMPANY WITH
MANAGEMENT SYSTEM
CERTIFIED BY DNV GL
= ISO 9001 =
= ISO 14001 =